

# FOREST RIVER VIBE





# MORE NEW STANDARD FEATURES ON EVERY VIBE!



## EXTERIOR STANDARD FEATURES

- HYPER LITE CONSTRUCTION - AMAZINGLY LIGHT!!!
- VACUUM BONDED "ALUMA FRAME" SIDEWALLS AND 2" LAMINATED FLOOR
- 15K BTU DUCTED A/C
- HIGH EFFICIENCY A/C COOLING SYSTEM (LARGER DUCT WORK)
- OUTSIDE KITCHEN WITH INDUCTION COOKTOP (25RK, 26BH, 26RK, 26RH, 29BH, 31BH, 32BH, 33BH)
- ALUMINUM WHEELS
- 6 GAL. G/E DSI WATER HEATER
- 2- 20# LP BOTTLES
- CABLE & SATELLITE PREP
- DIGITAL TV ANTENNA W/BOOSTER
- EXTRA LARGE, ALUMINUM FRAMED, PASS THRU STORAGE
- SPARE TIRE & CARRIER
- OUTSIDE SHOWER
- SPREAD AXLE SYSTEM
- BACK-UP CAMERA PREP

## INTERIOR STANDARD FEATURES

- 12 VOLT EVERCHILL RESIDENTIAL REFER
- TRI FOLD SOFA (N/A 22RB, 24RL)
- EXTRA LARGE POTS & PANS DRAWER
- DOMETIC PEDAL FLUSH TOILET
- STD 26" CRYSTAL FIREPLACE (SELECT MODELS)
- UPGRADED RESIDENTIAL STYLE CARPET
- EXTRA LARGE SINGLE BOWL KITCHEN SINK
- DECORATIVE GLASS INSERTS IN KITCHEN CABINETS
- HARD DOORS TO BEDROOMS FOR PRIVACY NOT CURTAINS
- SKYLIGHT OVER TUB/SHOWER AND KITCHEN AREA
- LARGE TRASH CAN W/ DESIGNATED OUT OF THE WAY AREA

## OPTIONS

- FREE STANDING TABLE W/ 4 CHAIRS IPO BOOTH DINETTE
- 6 CU. FT. GAS/ELECTRIC REFER
- 50 AMP SERVICE W/WIRE & BRACE FOR 2ND A/C
- 2ND 13.5K A/C IN BEDROOM/BUNKROOM (REQUIRES 50 AMP)
- Z240
- NEBRASKA STATE SEAL

## INFINITY PACKAGE

- STAINLESS STEEL SPRING FAUCET
- SPRAY ON ROCK GUARD
- DENVER PILLOW TOP MATTRESS
- LCI FOLD DOWN SOLID STEP
- 50" FLAT SCREEN TV (22RB 40" TV)
- LED AWNING LIGHT
- RECESSED STOVE WITH GLASS COVER
- DECORATIVE WINDOW TREATMENTS (LIVING ROOM ONLY)
- NIGHT SHADES (LIVING ROOM ONLY)
- NEW 3/4 FRONT FIBERGLASS CAP W/ LED LIGHT
- SOLID SURFACE COUNTERTOPS
- BLACK TANK FLUSH
- SOLAR PANEL PREP
- STAINLESS STEEL CHEF'S APPLIANCE PACKAGE
- FURRION DVD/BLUETOOTH STEREO & SPEAKERS
- STAINLESS STEEL ROLL UP SINK COVER
- TEDDY BEAR SERIES BUNK MATS (BUNKHOUSE MODELS)

FOREST RIVER  
**VIBE**





22RB



24RL



25RK

## COUPLES COACH TRAVEL TRAILERS



26RK



28RL



29RL



33RK

100% POI, ALL VIBE UNITS ARE INSPECTED OFFLINE.

FOR A MORE COMPREHENSIVE LOOK  
AT OUR FLOORPLANS AND 360° TOURS  
PLEASE VISIT [WWW.FORESTRIVERINC.COM](http://WWW.FORESTRIVERINC.COM)



24BH



26BH

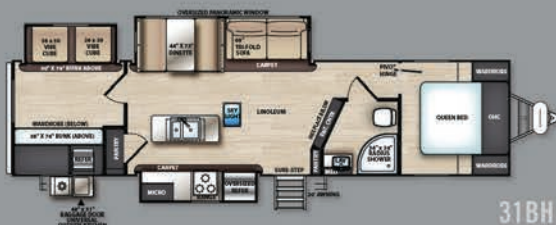


28BH

## BUNKHOUSE TRAVEL TRAILERS



29BH



31BH



32BH



33BH

### COUPLES COACH TRAVEL TRAILERS

### BUNKHOUSE TRAVEL TRAILERS

MODEL	22RB	24RL	25RK	26RK	28RL	29RL	33RK	24BH	26BH	28BH	29BH	31BH	32BH	33BH
HITCH WEIGHT (lbs.)	740	TBD	600	800	760	TBD	920	685	755	970	975	830	930	830
UVW	5253	TBD	5868	6328	6928	TBD	7188	5573	6053	6638	7258	7673	7408	7563
CCC (CARGO CAP.)	2487	TBD	1732	3272	2632	TBD	2532	2112	1702	3132	2517	1957	2322	2067
EXTERIOR LENGTH	29' 0"	TBD	29' 4"	33' 3"	34' 3"	TBD	37' 9"	28' 9"	32' 10"	36' 6"	37' 9"	38' 4"	38' 8"	38' 7"
EXTERIOR HEIGHT	11' 0"	TBD	11' 3"	11' 2"	11' 2"	TBD	11' 2"	11' 2"	10' 10"	11' 2"	11' 2"	11' 2"	11' 2"	11' 2"
FRESH WATER (gal.)	40	TBD	40	40	40	TBD	40	40	38	40	40	40	40	40
BLACK WATER (gal.)	30	TBD	30	30	30	TBD	30	30	32	30	30	30	60	30
GREY WATER (gal.)	60	TBD	60	60	70	TBD	60	60	64	60	60	60	60	60
AWNING SIZE	16'	TBD	16'	18'	11'	20'	2 X 11'	18'	18'	20'	18'	20'	18'	18'
TIRE SIZE	14"	TBD	14"	15"	15"	15"	15"	14"	15"	15"	15"	15"	15"	15"





**PRE-DELIVERY INSPECTION FACILITY**  
20,000 square feet of quality assurance. The bare essentials for a premium product. This state-of-the-art facility gives immediate daily feedback to production for quality assurance in every unit built.



[www.ForestRiverBuyLocal.com](http://www.ForestRiverBuyLocal.com)



**GVWR (Gross Vehicle Weight Rating)** - is the maximum permissible weight of the unit when fully loaded. It includes all weights, inclusive of all fluids, cargo, optional equipment and accessories. For safety and product performance do NOT exceed the GVWR.

**GAWR (Gross Axle Weight Rating)** - is the maximum permissible weight, including cargo, fluids, optional equipment and accessories that can be safely supported by a combination of all axles.

**UVW (Unloaded Vehicle Weight)\*** - is the typical weight of the unit as manufactured at the factory. It includes all weight at the unit's axle(s) and tongue or pin and LP Gas. The UVW does not include cargo, fresh potable water, additional optional equipment or dealer installed accessories.

\*Estimated Average based on standard build optional equipment.

**CCC (Cargo Carrying Capacity)\*\*** - is the amount of weight available for fresh potable water, cargo, additional optional equipment and accessories. CCC is equal to GVWR minus UVW. Available CCC should accommodate fresh potable water (8.3 lbs per gallon). Before filling the fresh water tank, empty the black and gray tanks to provide for more cargo capacity.

\*\* Estimated average based on standard build optional equipment

Each Forest River RV is weighed at the manufacturing facility prior to shipping. A label identifying the unloaded vehicle weight of the actual unit and the cargo carrying capacity is applied to every Forest River RV prior to leaving our facilities.

The load capacity of your unit is designated by weight, not by volume, so you cannot necessarily use all available space when loading your unit.

All information contained in this brochure is believed to be accurate at the time of publication. However, during the model year, it may be necessary to make revisions and Forest River, Inc., reserves the right to make all such changes without notice, including prices, colors, materials, equipment and specifications as well as the addition of new models and the discontinuance of models shown in this brochure. Therefore, please consult with your Forest River dealer and confirm the existence of any materials, design or specifications that are material to your purchase decision.

# FOREST RIVER VIBE



**Learn More**  
Scan this barcode using a QR Reader on your smart phone to learn more about Forest River.



A Berkshire Hathaway company.

**VIBE**  
411 CR 15, Elkhart, IN 46516  
(574) 296-2084  
[www.forestriverinc.com/VIBE](http://www.forestriverinc.com/VIBE)  
[www.forestriveraccessories.com](http://www.forestriveraccessories.com)

**YOUR LOCAL VIBE DEALER**