

**QUANTUM**<sup>®</sup>  
BY THOR MOTOR COACH

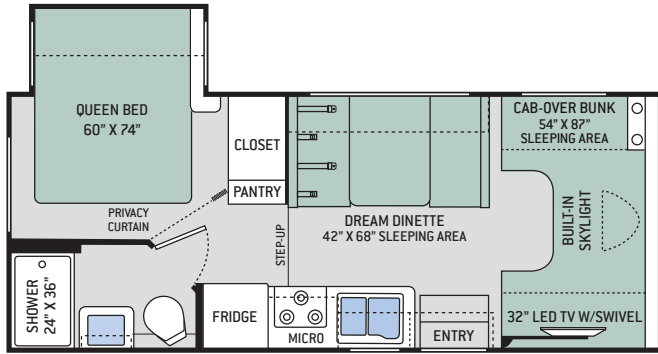


 **THOR**<sup>®</sup>  
MOTOR COACH

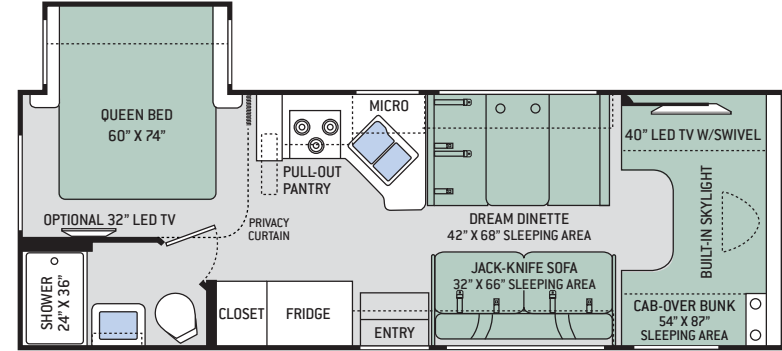
Made to fit.

# Floor Plans

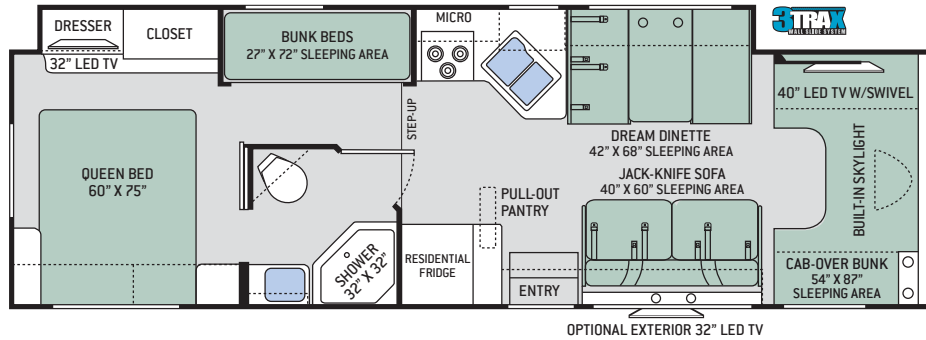
## GR22



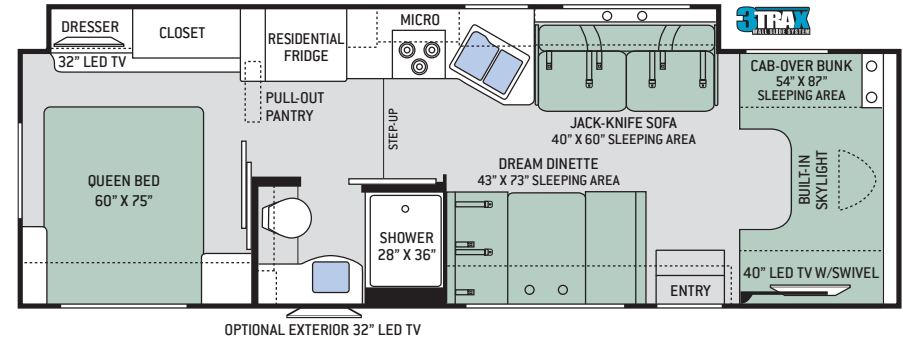
## RS26



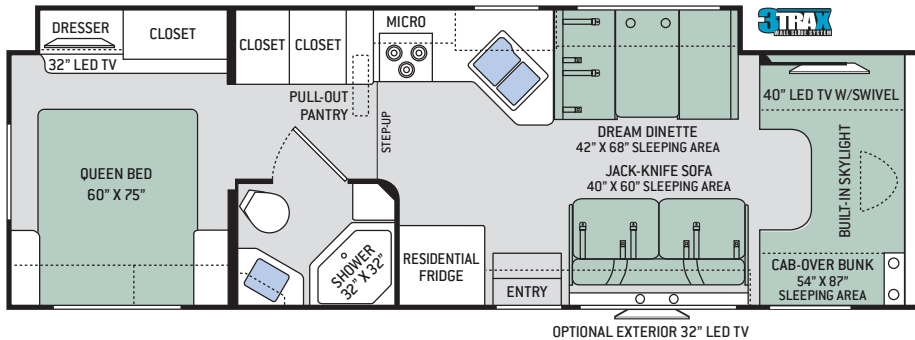
## LF31



## PD31



## WS31



## Specifications

	GR22	RS26	LF31	PD31	WS31
Chassis	Ford	Ford	Ford	Ford	Ford
Gross Vehicle (GVWR)	14,500	14,500	14,500	14,500	14,500
Gross Combined (GCWR)	22,000	22,000	22,000	22,000	22,000
Wheel Base	158"	183"	223"	212"	223"
Exterior Length (w/out ladder)	24'	27'-6"	32'-7"	31'-3"	32'-2"
Exterior Height (w/AC)	10'-10"	11'-1"	11'-1"	11'-1"	11'-1"
Exterior Width (w/out mirrors)	99"	99"	99"	99"	99"
Interior Height	84"	84"	84"	84"	84"
Awning Size	18'	18'	16'	16'	16'
Fuel (gal)	55	55	55	55	55
LPG (lbs)	40.9	40.9	40.9	40.9	40.9
Fresh/Waste/Gray Water (gal)	40 / 24.5 / 37	40 / 26 / 26	40 / 28 / 28	40 / 28 / 28	40 / 28 / 28
Water Heater (gal)	6	6	6	6	6
Furnace (BTUs)	19,000	30,000	30,000	30,000	30,000
Exterior Storage Capacity (cu. ft.)	30.9	40	57.5	52.9	54.6



3TRAX™ is our in-wall slideout system, housing all the moving and mechanical parts within the sidewall of the motorhome. This triple track design supports large rooms, like those found in full-wall slideouts, ensuring simple, reliable, maintenance-free operation. What sets 3TRAX™ apart is the patented rail system, in-floor roller guides and electric motor design. For more information, visit [thormotorcoach.com/3TRAX](http://thormotorcoach.com/3TRAX).

# Interior Decor



ARCTIC FROST



REGAL ONYX



SPARKLING WINE



HIGH-GLOSS GLAZED MILAN CHERRY



HIGH-GLOSS GLAZED MONTEREY MAPLE



RESIDENTIAL VINYL FLOORING



KITCHEN COUNTERTOP

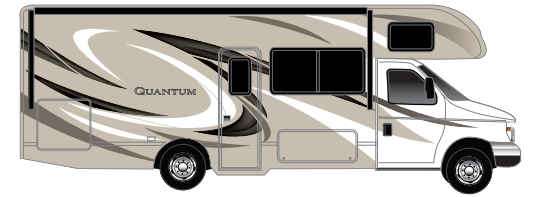


DINETTE COUNTERTOP



BED & BATH COUNTERTOP

# Exterior Graphics



BLACK JACK 



ROYAL FLUSH 



HIGH ROLLER PARTIAL-PAINT 




JACKPOT PARTIAL-PAINT 



# Features

## CONSTRUCTION & EXTERIOR

- Ford® E-Series Chassis
- Automatic Leveling Jacks (LF31, PD31 & WS31)
- Premium One-Piece TPO Roof 
- One-Piece Fiberglass Front Cap with LED Accent Lighting
- Built-In Skylight with Electric Shade
- HD-MAX® Exterior with Graphics Package
- MEGA-Storage™ Compartment (GR22 & RS26)
- Rotocast Storage Compartments
- Power Patio Awning with Integrated LED Lighting
- Slideout Room Awning
- Roof Ladder
- Outside Shower
- Framed Slider Windows (GR22 & RS26)
- 8,000-lb. Trailer Hitch with 7-pin Round Connector

## CONSTRUCTION & EXTERIOR

- Partial-Paint on HD-MAX® Exterior with Graphics Package

## AUTOMOTIVE & COCKPIT

- Touchscreen AM/FM Dash Radio with CD/DVD Player, Bluetooth® & Back-Up Monitor
- Deluxe Exterior Mirrors
- Windshield Privacy Curtain
- Power Windows and Door Locks
- Keyless Entry System (LF31, PD31 & WS31)
- Wood Dash Applique
- Aluminum Running Boards
- Valve Stem Extenders (LF31, PD31 & WS31)
- Wheel Liners

## AUTOMOTIVE & COCKPIT OPTIONS

- Heated/Remote Exterior Mirrors with Integrated Side View Cameras
- Leatherette Captain's Chairs
- Power Driver's Seat (LF31, PD31 & WS31)
- Cockpit Carpet Mat
- Keyless Entry System (GR22 & RS26)
- Valve Stem Extenders (GR22 & RS26)

**IMPORTANT—PLEASE READ:** This brochure reflects product design, fabrication, material, components and specifications at the date of printing, which date is disclosed below. **Please visit us online at [ThorMotorCoach.com](http://ThorMotorCoach.com) or consult with your selling dealership for the latest in standards, options, specification and technical information.** Photographs in the brochure may depict optional equipment or may only be available in certain floor plans. Components, appliances and the chassis may have been manufactured in a calendar year before the vehicle's designated model year. All capacities are approximate. The actual length of the vehicle may differ from that indicated in the brochure due to variances in the manufacturing processes and/or installed components. All dry weights are based on standard model features and do not include optional features or equipment. Component part and appliance manufacturers issue limited warranties covering portions of the vehicle not covered under the limited warranty we issue. Copyright Thor Motor Coach, Inc. © MY 04/15/16

## INTERIOR

- Rubber Tread Entry Steps with Lighted Step Well
- Residential Vinyl Flooring Throughout
- Ceiling Ducted Air Conditioning System (RS26, LF31, PD31 & WS31)
- LED Lighting
- Cab-Over Bunk Ladder
- Leatherette Sofa (RS26, LF31, PD31 & WS31)
- Leatherette Dream Dinette® Booth
- High-Gloss Glazed Solid Wood Cabinetry with Raised Panel Upper Cabinet Doors, Hidden Hinges & Nickel Finish Hardware
- Full Extension Metal Ball-Bearing Drawer Guides
- Window Privacy Roller Shades

## INTERIOR OPTIONS

- 12-volt Attic Fan with Cover in Cab-Over Bunk
- Single Child Safety Tether in Dinette
- Dual Child Safety Tethers in Dinette

## KITCHEN

- 6 cu. ft. Double Door Refrigerator w/Black Panel Inserts (GR22 & RS26)
- Stainless Steel Double Bowl Sink & Single Handle Faucet w/Pull-Down Sprayer
- 3-Burner Gas Cooktop (GR22 & RS26)
- 3-Burner Gas Cooktop with Oven (LF31, PD31 & WS31)
- Microwave Oven
- Pop-Up Countertop Outlet (LF31, PD31 & WS31)
- Solid Surface Kitchen Countertop & Sink Covers
- Waste Basket

## KITCHEN OPTIONS

- 3-Burner Gas Cooktop with Oven (GR22 & RS26)
- Convection Microwave Oven (GR22 & RS26)

## BEDROOM & BATHROOM

- Denver Mattress® Queen Size Bed
- Bedspread & Pillow Shams
- Shower with Retractable Door (GR22 & RS26)
- Shower with Glass Door (LF31, PD31 & WS31)
- Porcelain Toilet
- 12-volt Attic Fan with Cover in Bedroom

YOUR LOCAL THOR MOTOR COACH DEALER



## ENTERTAINMENT

- 32" LED TV & DVD Player on Manual Swivel in Cab-Over (GR22)
- 40" LED TV & DVD Player on Manual Swivel in Cab-Over (RS26, LF31, PD31 & WS31)
- 32" LED TV in Bedroom (LF31, PD31 & WS31)
- Two (2) 13" LED TVs w/DVD Player in Bunk Bed Area (LF31)
- Power Charging Center for Electronics (LF31, PD31 & WS31)
- Cable TV Ready
- Digital TV Antenna

## ENTERTAINMENT OPTIONS

- 39" LED TV, DVD Player & Sound Bar IPO STD Living Area TV
- 32" LED TV in Bedroom (RS26)
- 32" LED Exterior TV on Manual Swivel (LF31, PD31 & WS31)
- Bluetooth® Coach Radio with Exterior Speakers (LF31, PD31 & WS31)

## ELECTRICAL & PLUMBING

- Onan® RV QG 4000 Gas Generator
- 30-amp Shoreline Power Cord
- Emergency Start Switch
- Dual Auxiliary House Batteries with Tray that Holds up to 4 Batteries (LF31, PD31 & WS31)
- 13,500 BTU Roof Front Air Conditioner
- Whole Coach Water Filtration System (LF31, PD31 & WS31)
- 6-gallon DSI Gas/Electric Water Heater
- Water Heater Bypass System
- Black Tank Flush System (LF31, PD31 & WS31)
- Enclosed Sewer Area for Sewer Tank Valves (LF31, PD31 & WS31)
- Holding Tanks with Heat Pads (LF31, PD31 & WS31)

## ELECTRICAL & PLUMBING OPTIONS

- 15,000 (IPO 13,500) BTU Roof Front Air Conditioner
- Holding Tanks with Heat Pads (GR22 & RS26)
- Second Auxiliary House Battery (GR22 & RS26)

## DIAMOND PACKAGE – STANDARD ON LF31, PD31 & WS31

- Frameless Slider Windows
- Stainless Steel 30" Over-the-Range Microwave Oven
- 11 cu. ft. Residential Refrigerator w/Ice Maker (LF31 & PD31)
- 16 cu. ft. Residential Refrigerator w/Ice Maker (WS31)
- 1800-watt Inverter
- Automatic Generator Start
- Rapid Camp® Wireless Control System



**Made to fit.**

[thormotorcoach.com/quantum](http://thormotorcoach.com/quantum)

P.O. Box 1486, Elkhart, IN 46515 Sales Department: 800.860.5658 Customer Service: 877.855.2867