

# News Release

## The 2015 Journey<sup>®</sup> – Luxurious Living Awaits in Your Journey!

If life is a journey, then why not travel in style? The Journey is the perfect blend of luxury and comfort with Ultraleather<sup>™</sup> furniture, coffee-glazed hardwood cabinetry, a counter-depth French door residential refrigerator, and top-of-the-line entertainment features. The new 40R boasts a full-wall slide, high-polished Corian<sup>®</sup> countertops, and a cozy lounge with an electric fireplace. Experience world-class ride and handling with the Freightliner<sup>®</sup> Maxum Chassis<sup>®</sup> and enjoy unbelievable storage—up to 229 cubic feet—thanks to its lowered-rail design. And now, larger Contour coach windows create an even more open feeling for luxurious living in your Journey on the road.

### Highlights:

- Three spacious floorplans: 36M, 42E, and new 40R
- Larger Contour coach windows create a more open feel
- Glide and Dine dining table that allows horizontal adjustment of the table to any of the numerous locking positions, as well as expansion of the length of the table to accommodate additional seating positions
- Exterior slide-out storage compartment tray now standard
- Counter-depth French door residential refrigerator now standard
- 2,800-watt inverter/charger and six AGM coach batteries now standard
- Electric fireplace in the lounge area is now standard in the 40R
- TrueAir<sup>®</sup> maximum comfort A/C
- Corian galley countertops, sink covers, and backsplashes with decorative tile accents
- MCD Duo<sup>®</sup> solar/blackout roller shades throughout coach
- PowerLine<sup>®</sup> energy management system
- Premier clearcoat automotive finish
- Premium Ultraleather cab seats and lounge furniture
- LED ceiling lights – reduce energy consumption by up to 70 percent, extending battery life when dry camping
- Power mirrors with defrost and integrated side-view color cameras
- Powered patio awning with metal wrap and integrated LED patio lighting
- Convenient exterior LPG accessory connection near patio area
- Automatic hydraulic leveling jacks with three position controls
- Freightliner Maxum Chassis 32,350 GVWR, 360-hp 6.7L Cummins<sup>®</sup> ISB XT diesel engine (36M); 380-hp 8.9L Cummins ISL diesel engine (40R); 44,320 GVWR, 400-hp 8.9L Cummins ISL diesel engine, tag axle (42E)
- Unmatched performance of Freightliner Maxum Chassis with expansive exterior storage
- Allison<sup>®</sup> 3,000MH six-speed automatic transmission
- Automatic hydraulic leveling jacks
- Chassis message center
- 10,000-lb. hitch (36M and 40R); 15,000-lb. hitch (42E)
- Stylized aluminum wheels
- 55-degree wheel cut for maneuverability
- TRW tilt and telescope steering column with foot-actuated pedal for driving comfort
- New Infotainment Center with AM/FM, CD/DVD player, SiriusXM<sup>™</sup> satellite radio, Bluetooth<sup>™</sup>, iPod<sup>®</sup>/iPhone<sup>®</sup> audio integration, outside temperature, compass, color rearview camera, side-view camera, 10.4" color touch screen monitor with split-screen function, second

passenger side monitor and Rand McNally RV GPS safe and easy routing, amenities and tools, trips and content, and turn-by-turn voice guidance

- Six beautiful full-body paint styles and three great choices of interior decor and coffee-glazed cabinet finish, including the Coffee Glazed Honey Cherry, Forest Cherry, and Vienna Maple
- Dual-pane Contour windows with integrated frame design to provide a precise transition between the vehicle body, window frame, and the glass for superior sealing, reduced wind noise, improved operation, and excellent protection of the window edge
- Available Features:
  - Tankless water heater
  - Electric fireplace in the bedroom (36M)
  - Residential stainless steel refrigerator
  - Stackable washer/dryer
  - Two moveable Ultraleather ottomans with removable/reversible lid and storage (36M, 40R, and 42E)

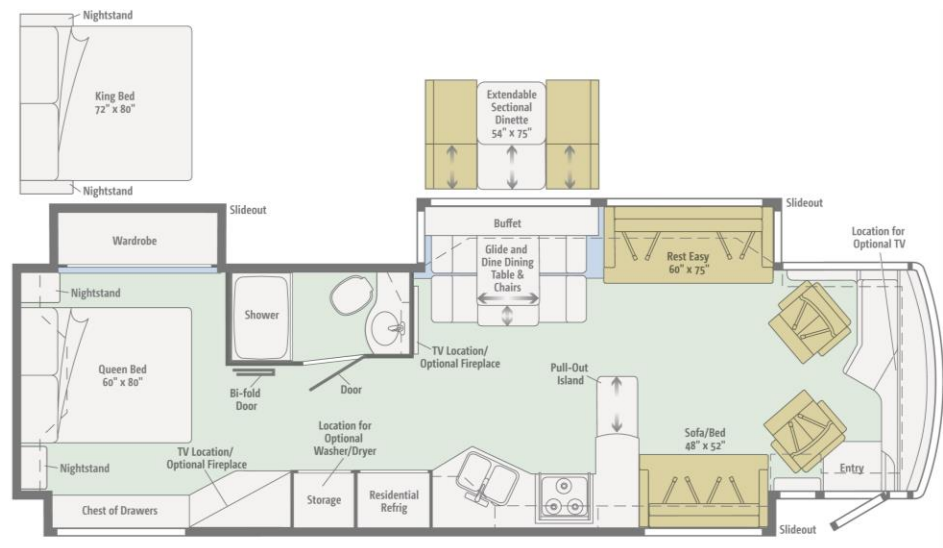
### **36M Floorplan**

The 36M features three slideouts – including a full-wall slide on the passenger's side. You will enjoy hosting family and friends in this luxurious full-wall slideout with two Ultraleather sofas, a pullout island, and a Glide and Dine dining table with buffet or available extendable sectional dinette. The Glide and

Dine is a Winnebago<sup>®</sup> designed dining table that allows horizontal adjustment of the table to any of the numerous locking positions, as well as expansion of the length of the table to

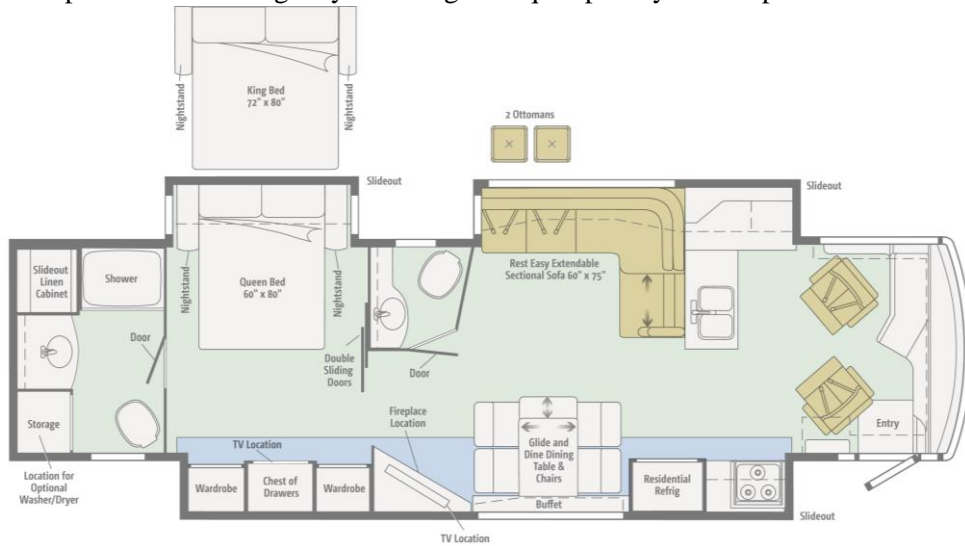
accommodate additional seating positions. The full-featured galley includes a galley with pullout island and a counter-depth residential refrigerator. The master bedroom has storage galore with a large wardrobe and chest of drawers flanking the queen-size bed. A powered, sliding king bed with

**Ideal Rest<sup>®</sup> Natural Reserve** digital comfort control mattress is also available.



## NEW 40R Floorplan

The new 40R is a triple-slide floorplan that provides a true residential feel with a spacious lounge, complete with a front galley featuring a unique split layout and pot-filler faucet adjacent to the range, a



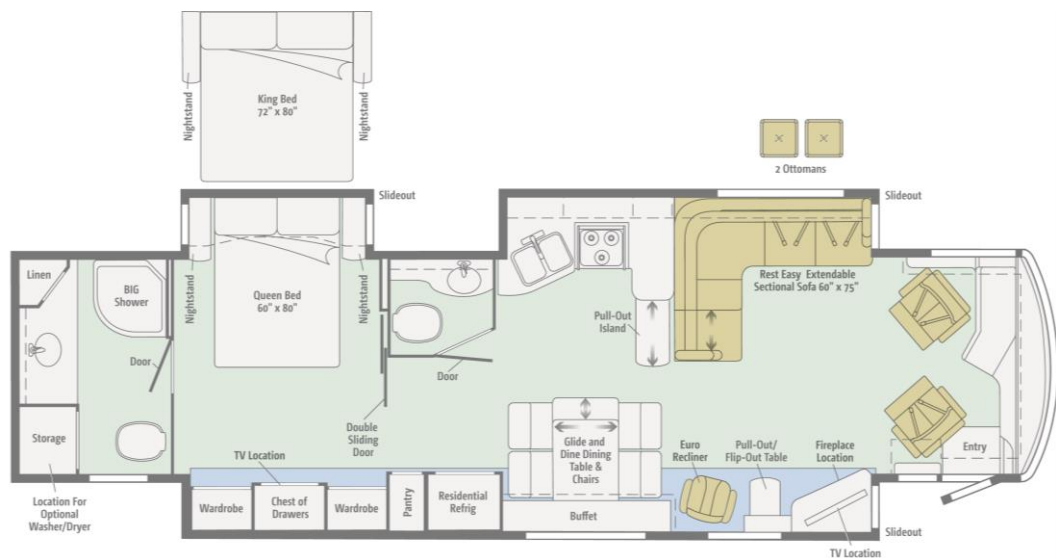
mid-coach lounge with Glide and Dine dining table/buffet and chairs, an Ultraleather Rest Easy® extendable sectional sofa, an entertainment center with hinged 55\"/>

available stackable washer and dryer. The bedroom features a powered queen or available king bed with **Ideal Rest Natural Reserve** digital comfort control mattress flanked by nightstands. The bedroom also features his and her wardrobes and a large chest of drawers.

## 42E Floorplan

The 42E is a tag-axle floorplan that features luxury in three distinct living areas. This triple-slide floorplan features a full-wall slide on the passenger side and two on the driver's side. The front lounge features an Ultraleather Rest Easy extendable sectional sofa and Euro recliner with a pullout table, a 46\"/>

swivel to provide additional seating. The full-featured galley features a pullout island, residential refrigerator, and extendable dining table and chairs with buffet. The half bath provides additional



convenience for company or for two people to get ready at the same time. The rear private master bath features the BIG Shower, storage, and the available stackable washer and dryer. The bedroom features a powered queen bed or available powered king bed with **Ideal Rest Natural Reserve** digital comfort control mattress, as well as a large wardrobe.